

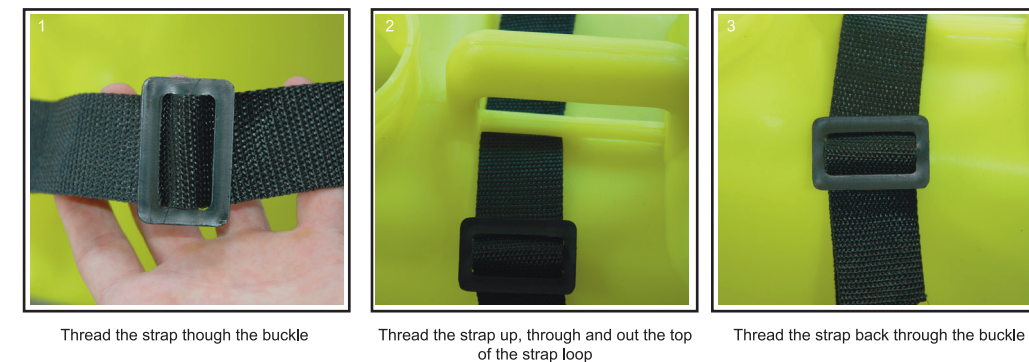
Knapsack Sprayer Accessories / Parts



Please read this information carefully and retain

Please follow these instructions before you use your sprayer. There are a few simple tasks to perform before your sprayer is ready for use. See below

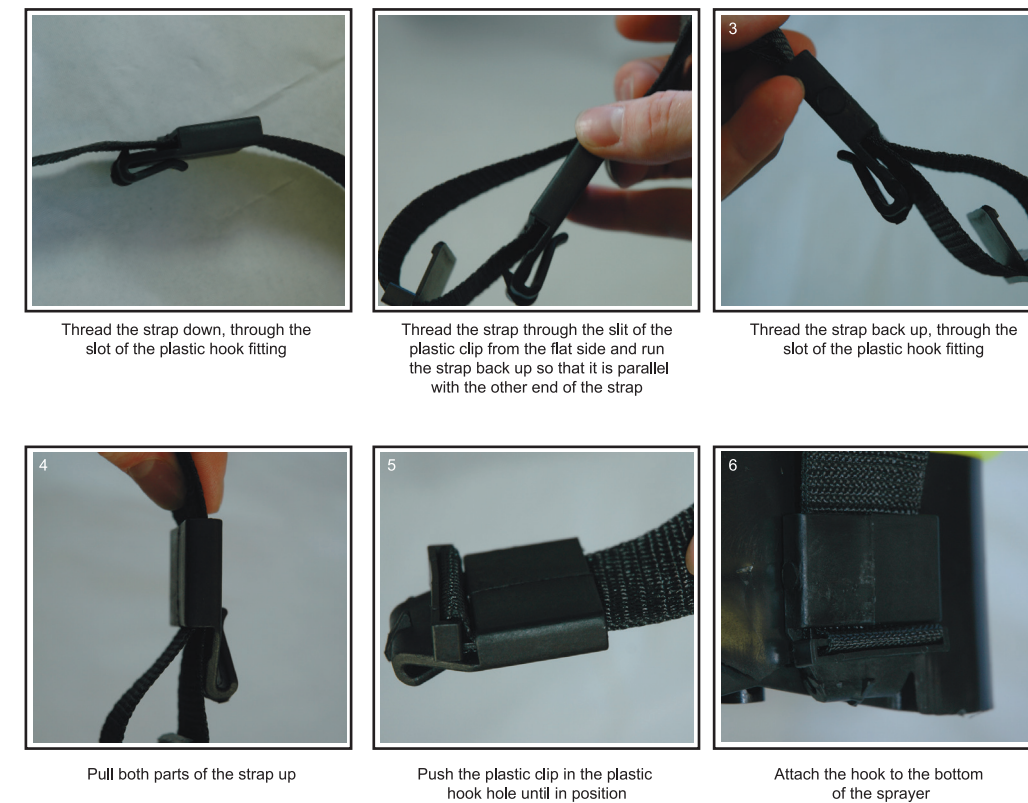
Buckle fitting assembly



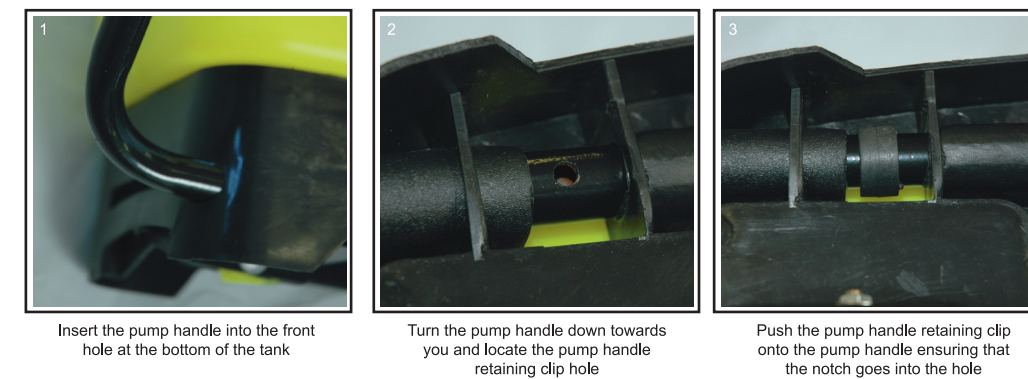
Plastic clip fitting assembly



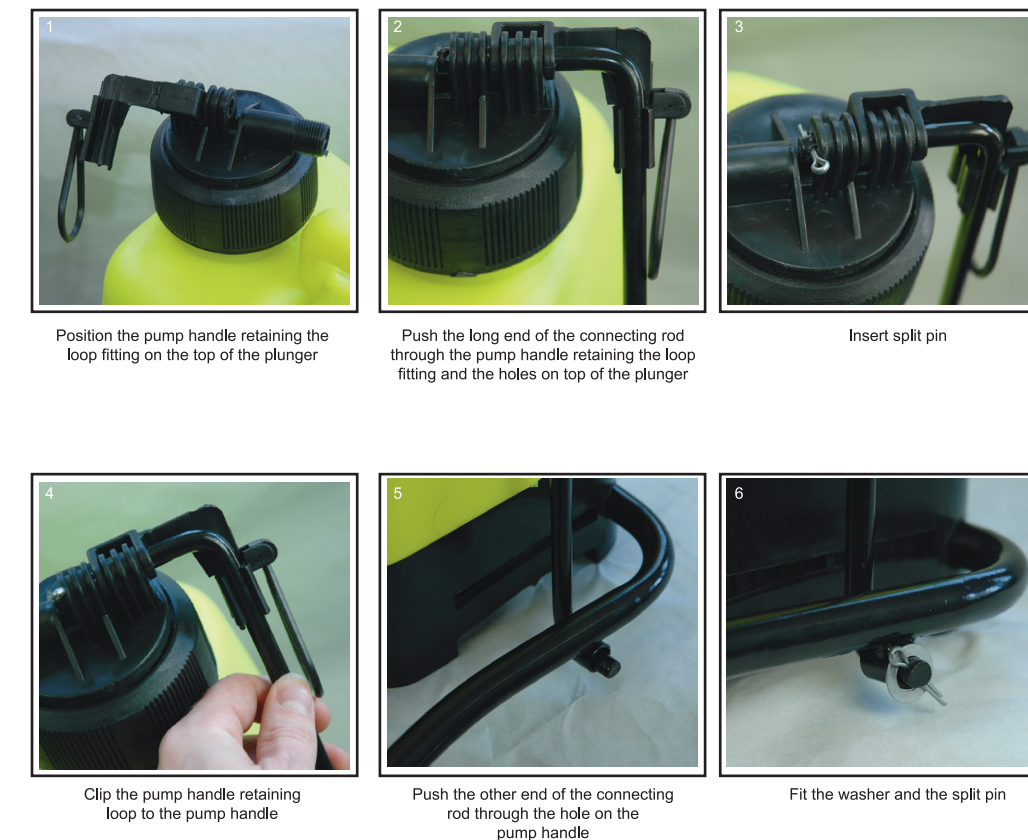
Plastic hook fitting assembly



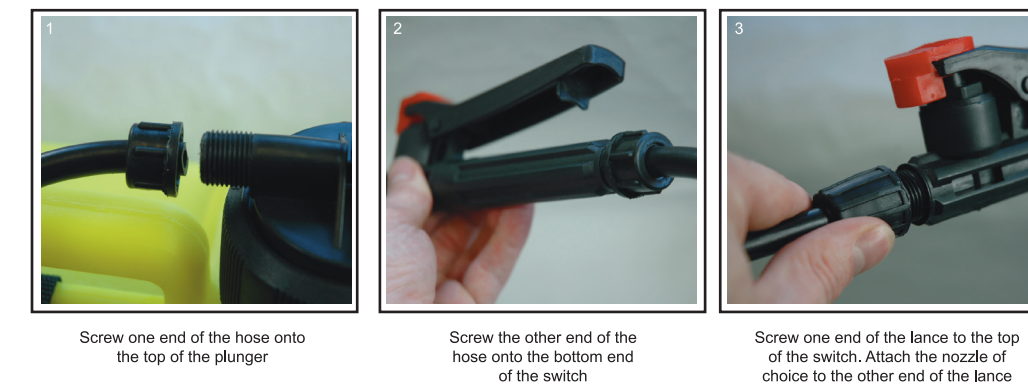
Pump handle assembly



Connecting rod assembly



Hose and lance assembly



Please read this information carefully and retain

This product is designed to be used safely with garden chemicals such as pesticides and weedkillers. It should NOT BE used with other products classified as corrosive, harmful or irritant such as bleaches, paints, varnishes, strong acids, caustic solutions or similar as these may damage the product. Please read the enclosed instructions before use.

When using the product ALWAYS wear suitable protective clothing to minimise the risk of personal injury and ALWAYS follow the manufacturer's instructions for the application and use of garden chemicals.

Operating Instructions

1. Ensure the backsprayer is empty, adjust the shoulder straps and ensure the backpack sprayer fits comfortably before filling the compartment.
2. Whilst removing the filler cap, ensure the filter remains in place. Fill the compartment to the desired level, DO NOT exceed the maximum fill level.
3. Once the desired level is reached screw the filler cap firmly on to create an airtight seal. (this allows for maximum pressure to be achieved)
4. Securely fit the sprayer onto your back and remove the spray lance from its holder. Hold securely in your right hand. Then release the pump handle, this is achieved by removing the retaining loop.
5. Pump the handle for up to 6-8 times to produce the pressure required in the compartment. Once the pressure sprayer is pressurised it is ready for operation.
6. Depress the trigger on the lance handle to allow spraying to commence. Either use the sprayer in this method or lock the trigger in the open position by sliding the locking clip into place.
7. Depending on the type of spray required, you can operate the sprayer with a single jet nozzle, twin head single jet nozzle or a 4 jet nozzle.
8. Maintaining pressure whilst spraying can be achieved with 2-3 pumps of the handle every 10 - 15 seconds of spraying.

Maintenance Instructions - After use and before storage!

1. Release the pressure from the container by holding down the trigger on the lance until no more solution or air is dispensed from the nozzle.
2. Pour away the remaining solution from the compartment and wash out, this will allow it to be clean for future use.
3. Please apply lubricant to the outside of plunger on a regular basis to ensure that it moves smoothly and prevents leakage.

FOLD

